

Weigh-in-Motion for Direct Enforcement

Intercomp's Experience



Intercomp

Industries we serve

Traffic/
Enforcement Scales



Racing/Auto
Scales



Agriculture
Scales



Aviation
Scales



Military
Scales



Industrial
Scales



Made in U.S.A.

Traffic & Enforcement

Portable & Fixed Weighing Solutions for Transportation

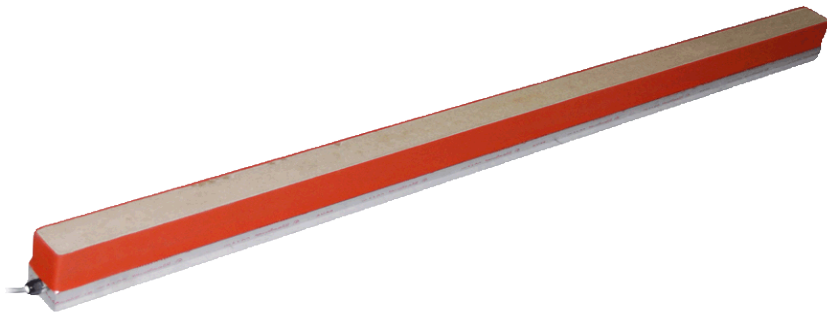
Fixed
Weigh-in-Motion
(WIM)



Portable Scales
(WIM and Static
Weighing)



Strain Gauge Strip Sensors

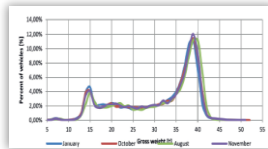


- High-performance WIM sensor.
- Strain gauge technology.
- Introduced 3 major advancements to the WIM industry:
 - Higher ability to sustain calibration over time.
 - Lower position sensitivity.
 - Higher longevity.

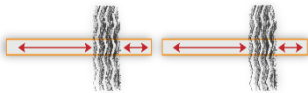
Strain Gauge Strip Sensors

Main benefits to end-users

- Higher ability to sustain calibration over time.



- Lower position sensitivity.



- Higher longevity.

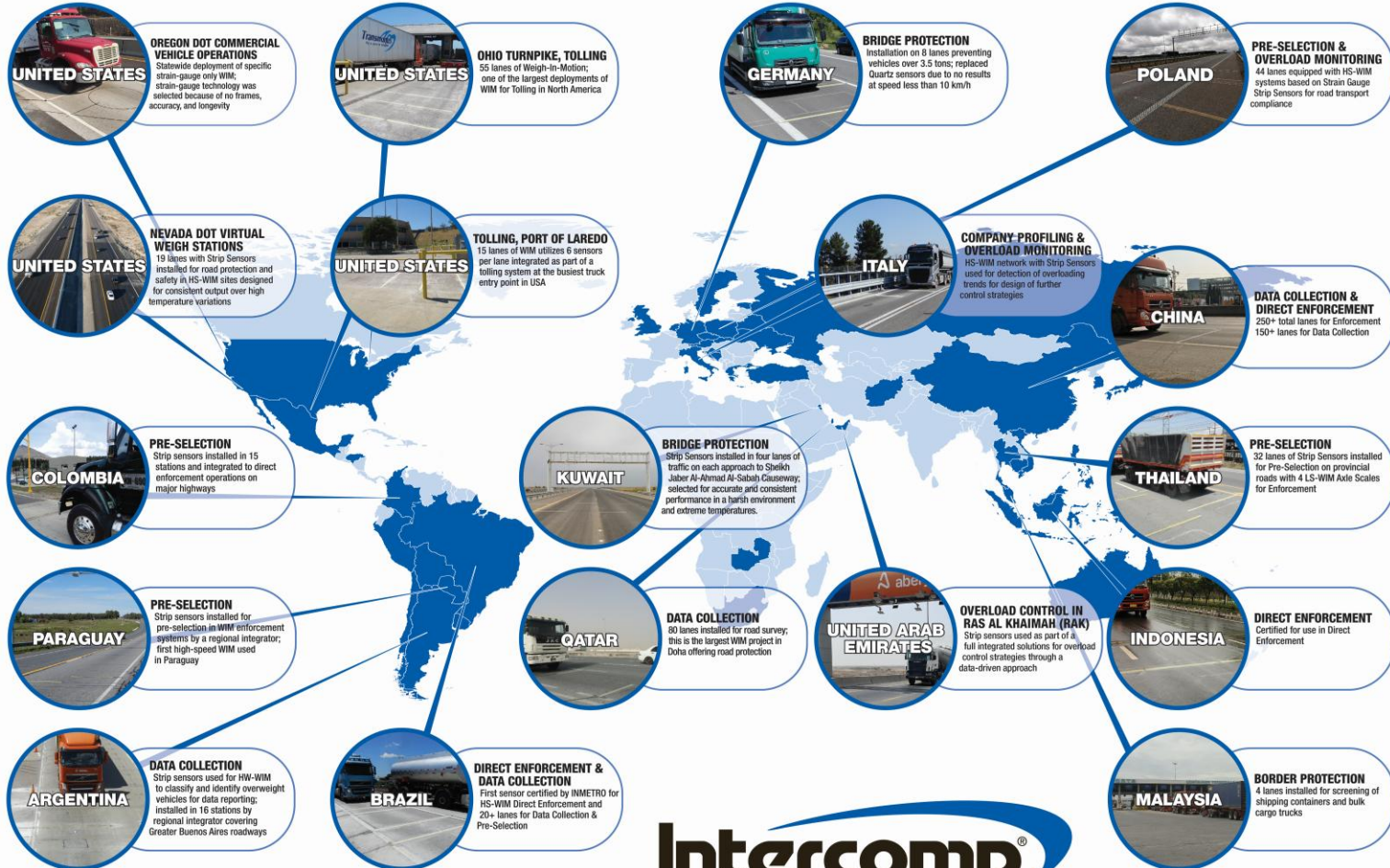


Superior stability, position sensitivity, and longevity...

= more reliable WIM data with lower operating costs.

Traffic & Enforcement

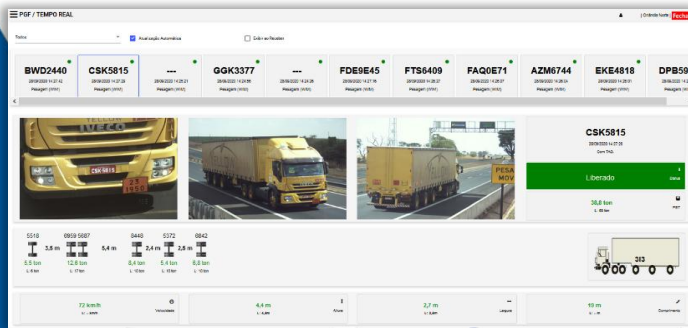
Driving enforcement and traffic data collection worldwide



Intercomp
advanced weighing technology . . . by any measure

HS-WIM for Direct Enforcement

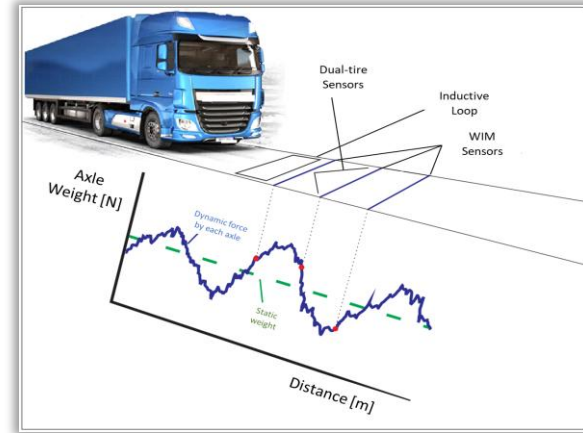
Concept



24/7 automated weight enforcement with no traffic disruptions and far lower costs than traditional weigh stations.

HS-WIM for Direct Enforcement

The real challenge



Roadways are uncontrolled environments.

HS-WIM for Direct Enforcement

Kazakhstan (2023-2025)



Kazakhstan launched the world's newest nationwide HS-WIM enforcement program, built on lessons from earlier pioneers:

- Pilot program with different sensor solutions.
- Over 100 lanes with strain gauge strip sensors after pilot phase.

HS-WIM for Direct Enforcement

Kazakhstan



International expertise and local know-how combined to create a successful, high-performance WIM network:

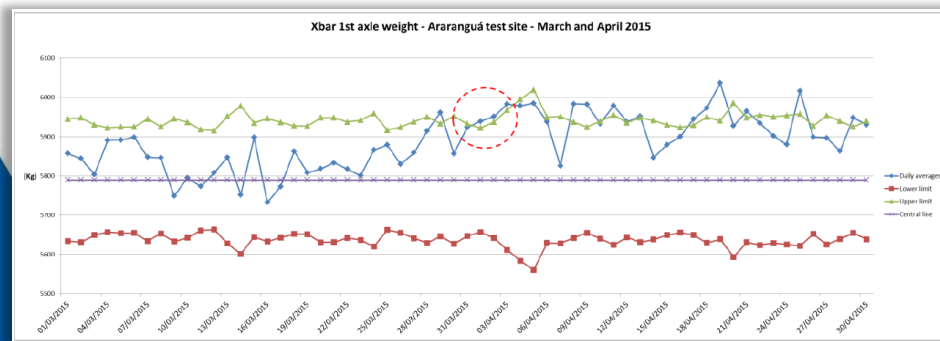
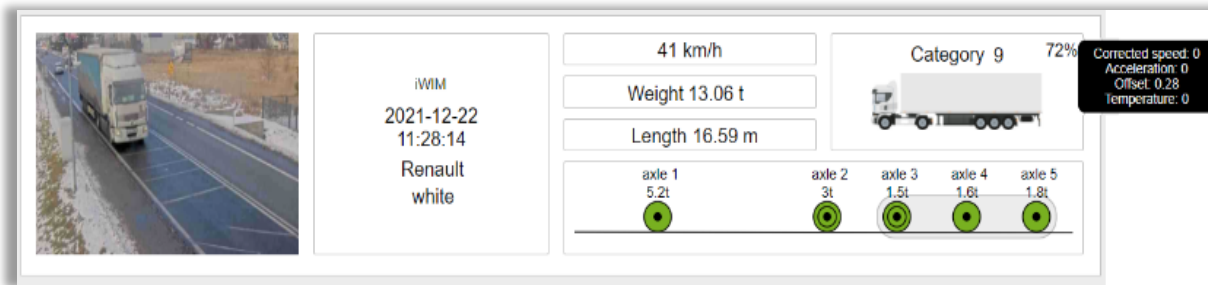
- Experienced integrators and skilled local support.
- Strain gauge strips for rough environmental conditions.

Station: WIM_00000000, Location: MOP_00000000, Direction: Balyktoik, Road: SB, Chisnagay: 571,215

Measurement	Allowed	Measured	Overruns
Axis pressure 1	10000 kg	6824 kg	-
Axis pressure 2	11500 kg	13413 kg	1913 kg
Axis pressure 3	10000 kg	9098 kg	-
Axis pressure 4	10000 kg	8799 kg	-
Axis pressure 5	10000 kg	8836 kg	-

HS-WIM for Direct Enforcement

Kazakhstan



Measurement validation and data quality management ensure no false positives.

HS-WIM for Direct Enforcement

Three keys to success (for any WIM program)

- 1) It's not enough to be accurate right after calibration — **choose a sensor that remains stable over time.**
- 2) You can't predict everything on the roadway — **monitor your data to ensure reliability.**
- 3) Value the expertise of **experienced integrators** — **their know-how is key to success.**



Intercomp[®]

advanced weighing technology . . . by any measure

3839 County Road 116

Medina, MN 55340 USA

Toll Free: 800-328-3336

Worldwide: 763-476-2531

info@intercompcompany.com

www.intercompcompany.com/its-enforcement-scales

intercompcompany.com