

# **Three different strategies of Weigh-in-Motion (WIM) for Direct Enforcement:**

The experience of **Intercomp** and **Fiscal Tech** in Brazil



# Today's Agenda

## **3 modes of WIM for direct enforcement in Brazil:**

- Automated fixed weigh stations.
- Mobile weigh stations.
- HS-WIM for direct enforcement.

# A Short History of WIM for Enforcement in Brazil

- **1970's:** Traditional Fixed Weigh Stations
- **2010's:** Mobile Weigh Stations.
- **2014:** Automated Fixed Weigh Stations
- **2022:** HS-WIM for Direct Enforcement.

# Automated Fixed Weigh Stations

- Main features:
  - High-speed WIM for pre-selection.
  - Low-speed WIM for Enforcement.
  - Automation.
  - Remote operation.



# Automated Fixed Weigh Stations in Action

- Fully automated weigh station.
- Enforcement officer operates remotely.
- Driver's self-service kiosk.
- Overload fine based on LS-WIM measurements.



# Automated Fixed Weigh Stations in Action

- HS-WIM pre-selection gantry.
- Per lane VMS for overload indication.
- High-efficiency enforcement.
- Video.



# Mobile Weigh Stations

- No fixed infrastructure required:
  - Accommodates changes in traffic trends.
  - Avoids the creation of escape routes.



# Mobile Weigh Stations in Action

- Easily deployed.
- Enforcement officer operates remotely.
- Lower cost in comparison to fixed weighing station.
- Dynamic or static operation.



# HS-WIM for Direct Enforcement

- Technical, legal and metrological developments.
- Extensive research with Intercomp Strip Sensors.
- First system type-approved in 2022.



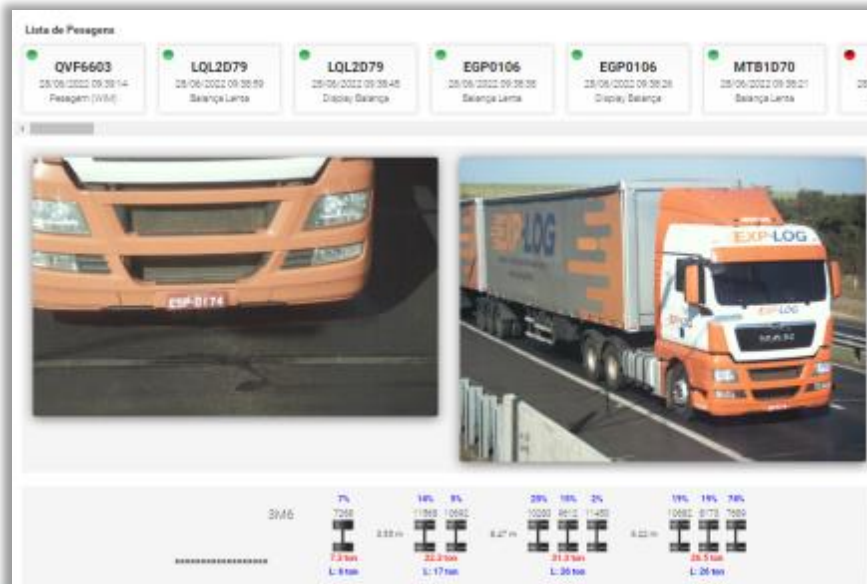
# HS-WIM for Direct Enforcement in Action

- Type approval certificate.
- Criteria: Maximum permissible error.
- 3 Accuracy classes.
- Legal tolerances under discussion.



# HS-WIM for Direct Enforcement in Action

- Lower installation cost.
- Lower operation and maintenance cost.
- Higher efficiency.
- Violation evidence.



# Invite for Action

- By sharing this experience, Intercomp and Fiscal Tech invite local stakeholders to **discuss the implementation of similar strategies in the African continent.**



Curitiba - Brazil

[comercial@fiscaltech.com.br](mailto:comercial@fiscaltech.com.br)

[fiscaltech.com.br](http://fiscaltech.com.br)

The Intercomp logo features the word 'Intercomp' in a large, bold, black sans-serif font. A blue swoosh underline starts under the 'I' and curves around the 'p'. Below the main text is the tagline 'advanced weighing technology . . . by any measure' in a smaller, black, sans-serif font.

**Intercomp**<sup>®</sup>  
advanced weighing technology . . . by any measure

3839 County Road 116  
Medina, MN 55340 USA

Toll Free: 800-328-3336

Worldwide: 763-476-2531

[info@intercompcompany.com](mailto:info@intercompcompany.com)

[intercompcompany.com](http://intercompcompany.com)

